

INTRODUCTION

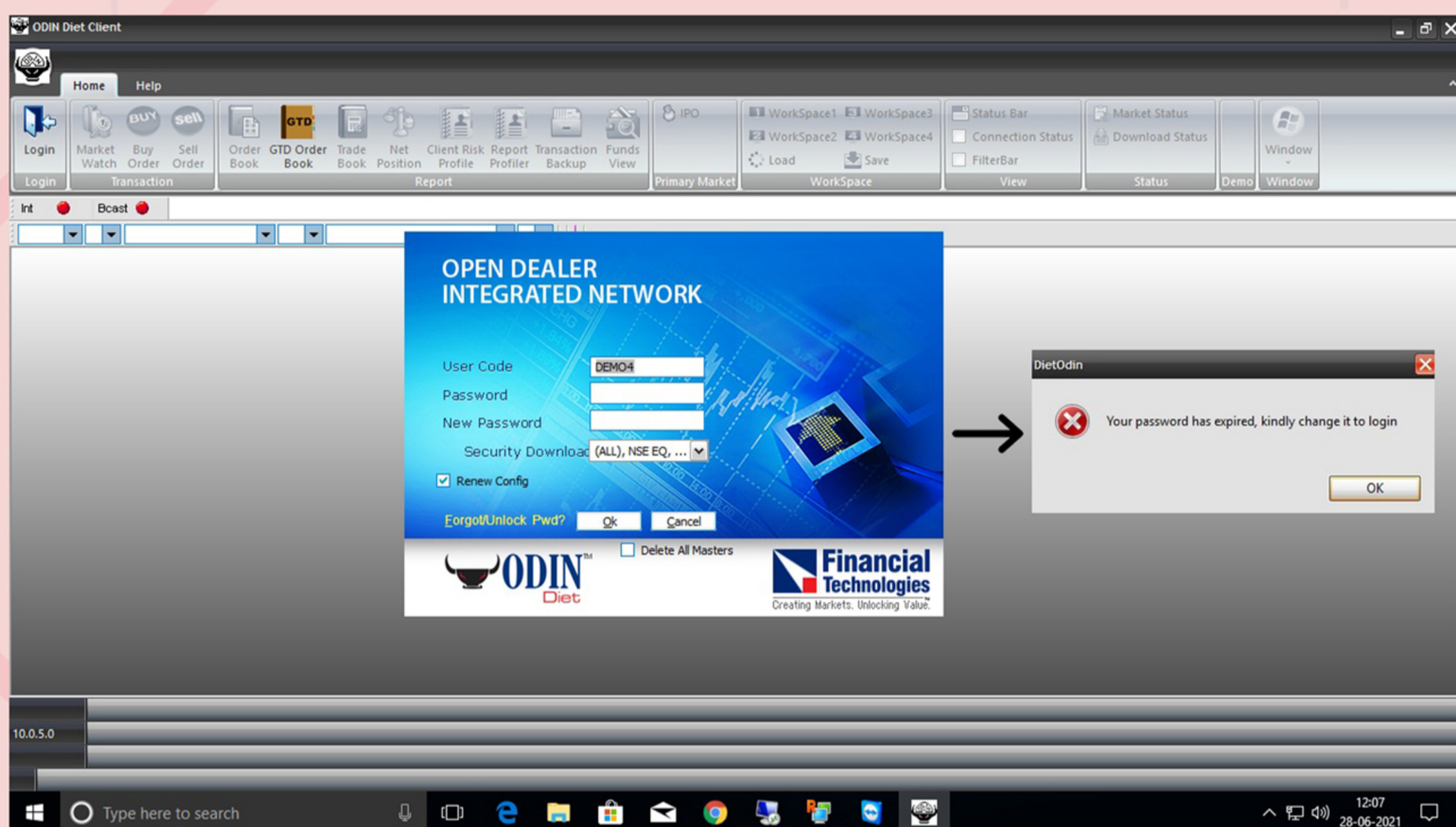
Desktop Application Support Guide (How to use the application)



01

Login Procedure

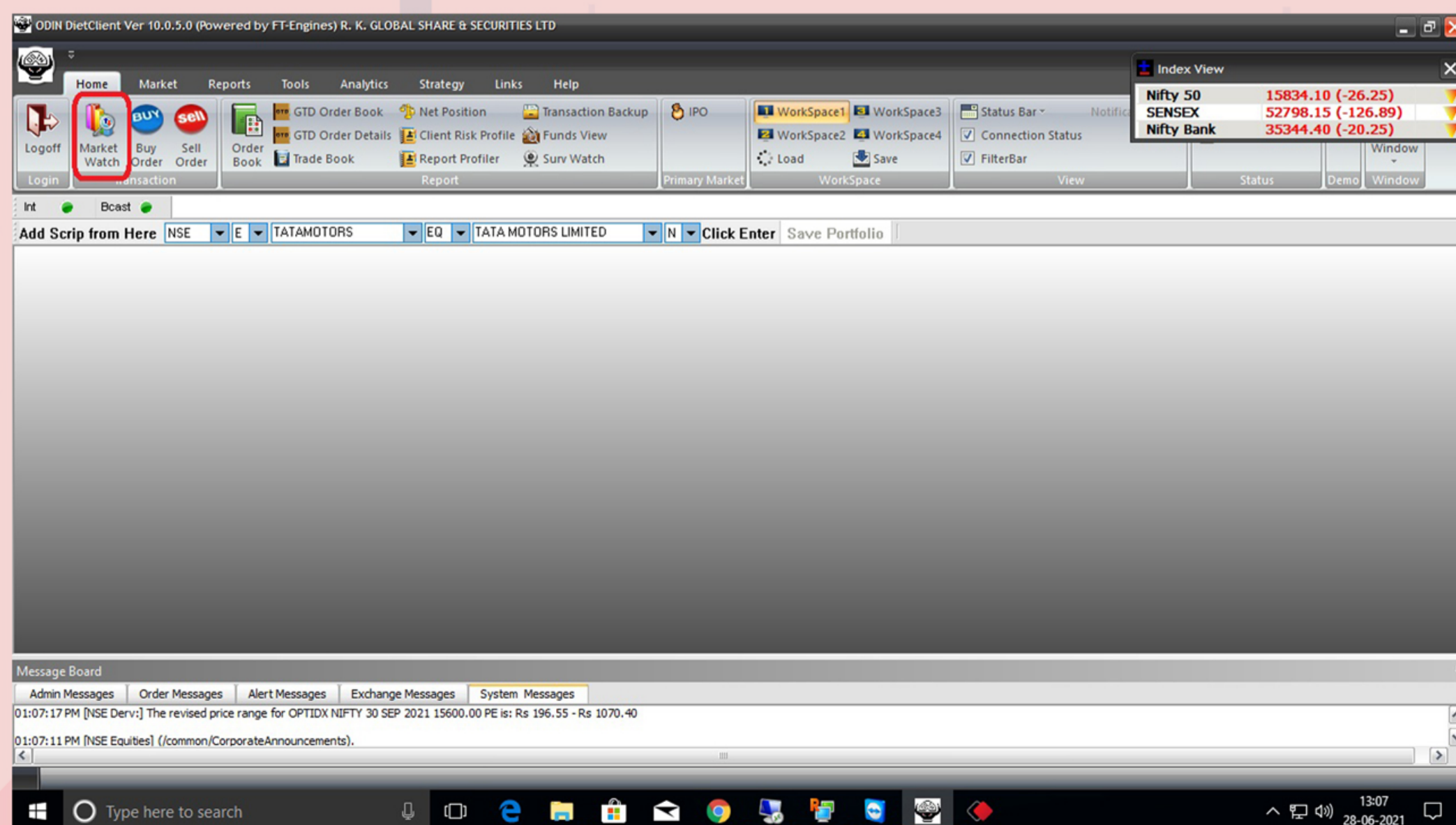
Input your "User Code / Trading Id / UCC Code" along with the Password that shared with you earlier. Software will prompt you to change the existing one. Do the needfull accordingly.



How to create a Market Watch?

02

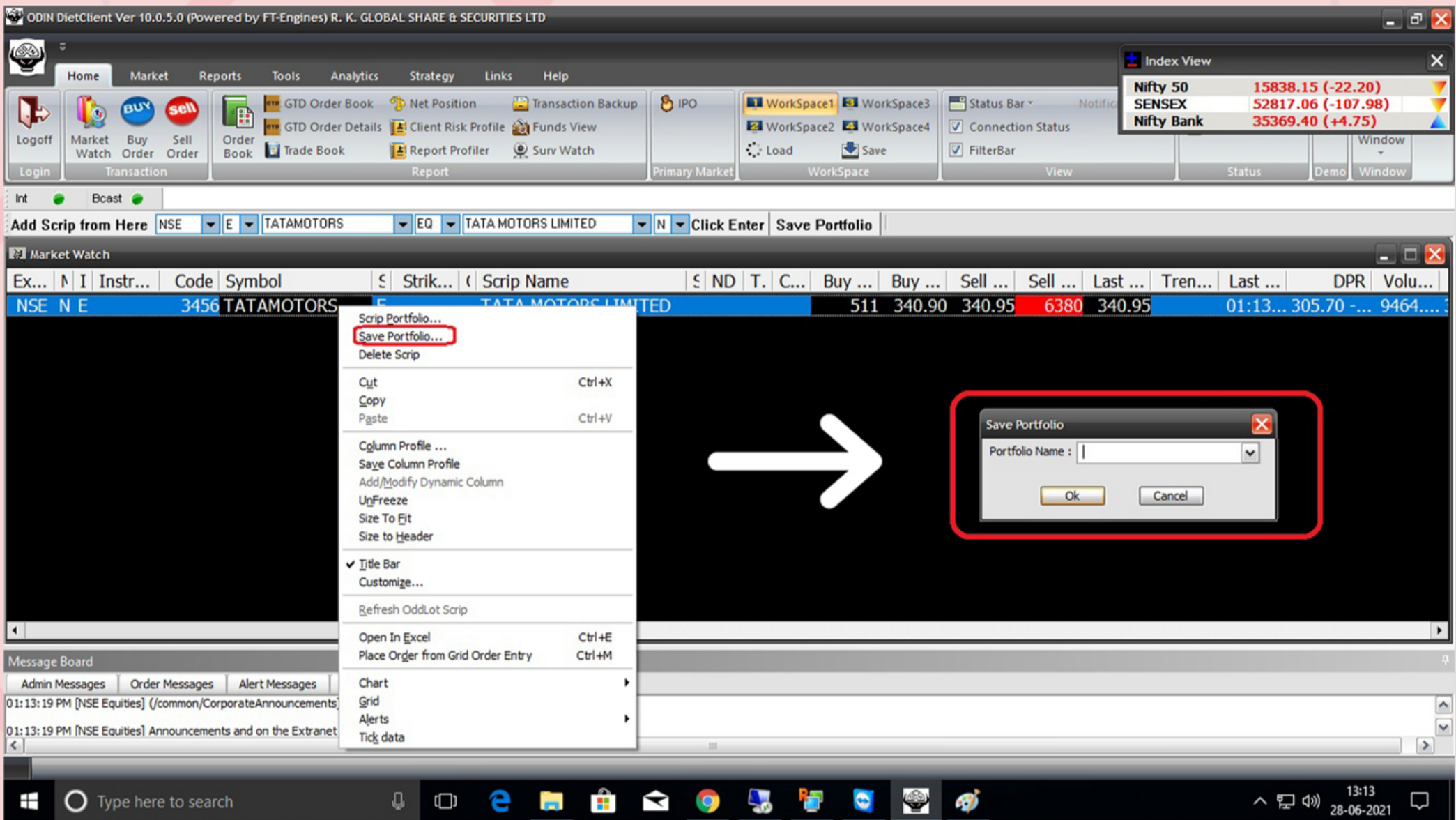
Under Home tab, you can find "Market Watch" option. Click on it to create a new one. Alternatively press "F4" to create a new one.



03

How to save the newly created Market Watch?

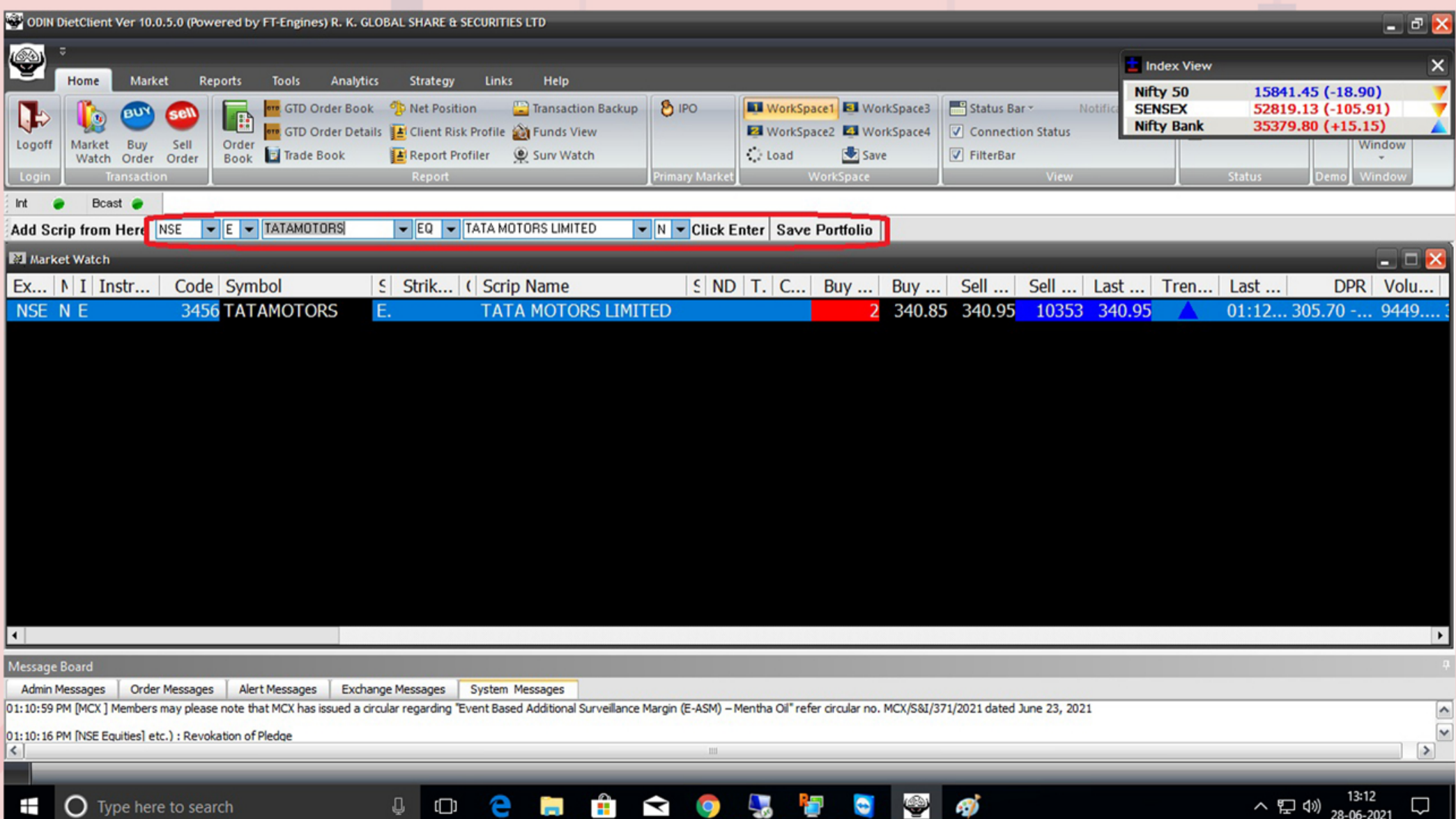
Right click on "Market Watch" window. Select "Save Portfolio" from the dropdown list. Type a Portfolio Name as per your choice and click "OK".



How to add Scrip?

04

Just above the Market Watch box, "Add Scrip" option is available. Select the necessary parameters like Exchange, Instrument type, Symbol etc.. and press Enter to add the Scrip on the existing Market Watch.



How to Buy / Sell any Scrip?

Select the Scrip in which you want to trade. Under the Home tab "Buy" / "Sell" option is available. Alternatively you can press "+" / "-" or "F1" / "F2" from your keyboard. Input the parameters like Total Qty, Price, Product type etc.. and press "Submit" button.

The screenshot displays the ODIN DietClient software interface. The top menu bar includes Home, Market, Reports, Tools, Analytics, Strategy, Links, and Help. The Home tab is active, showing 'Buy' and 'Sell' buttons. The Market Watch table shows the following data:

Ex...	I	Instr...	Code	Symbol	Strik...	Scrip Name	ND	T	C...	Buy ...	Buy ...	Sell ...	Sell ...	Last ...	Tren...	Last ...	DPR	Volu...
NSE	N	E	3456	TATAMOTORS	E.	TATA MOTORS LIMITED				4010	341.55	341.60	460	341.60		01:17...	305.70	9684...

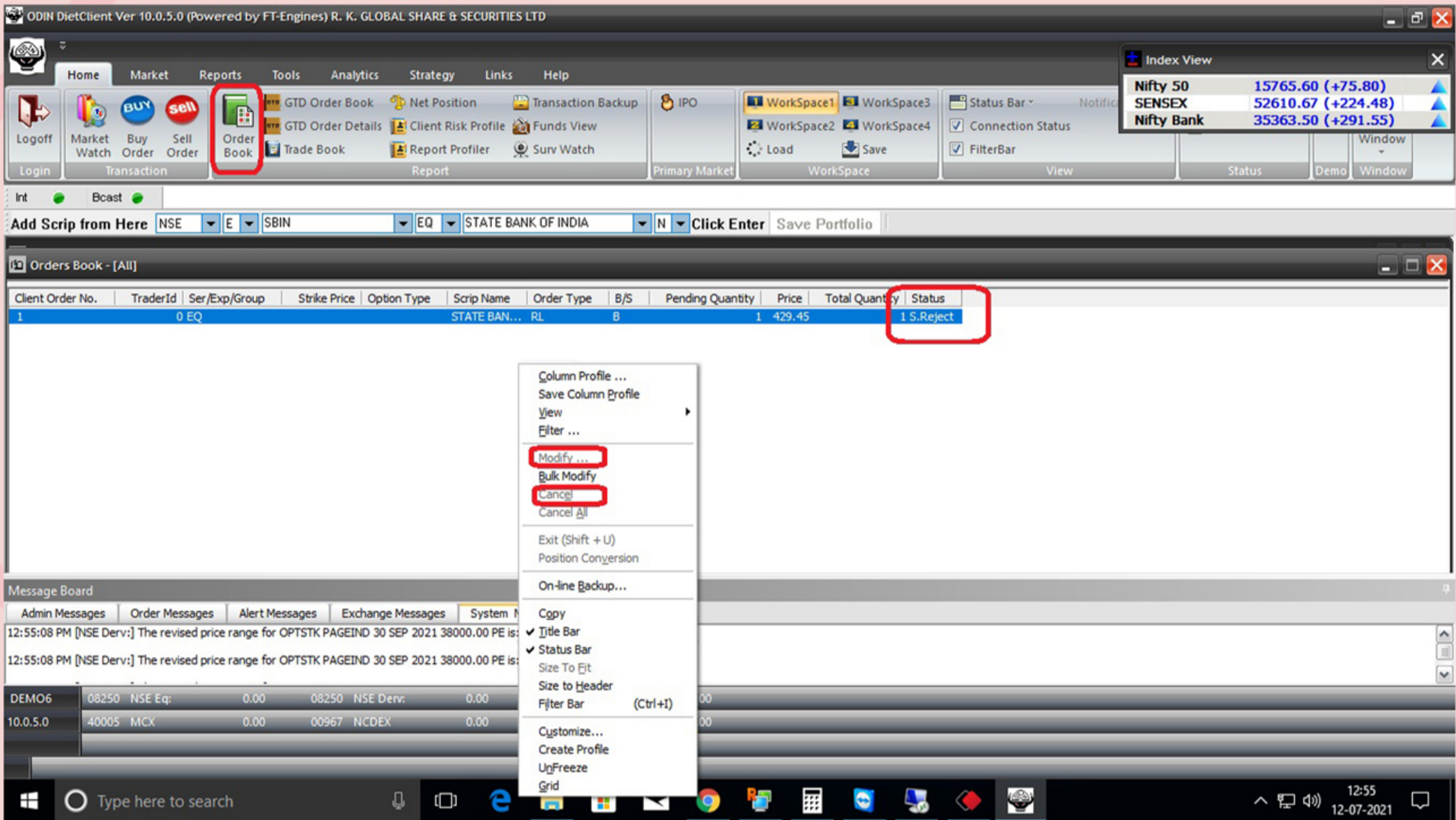
Below the Market Watch table, two Order Entry windows are shown. The left window is for a 'BUY' order with a price of 341.55. The right window is for a 'SELL' order with a price of 340.70. Both windows include fields for Order Type, Code, Symbol, Series, Total Qty, Price, Prof %, Settle, Dis Qty, and Product Type. The bottom of the interface shows a Message Board with system messages.



06

How to check your Order Book, Modify or Cancel Order?

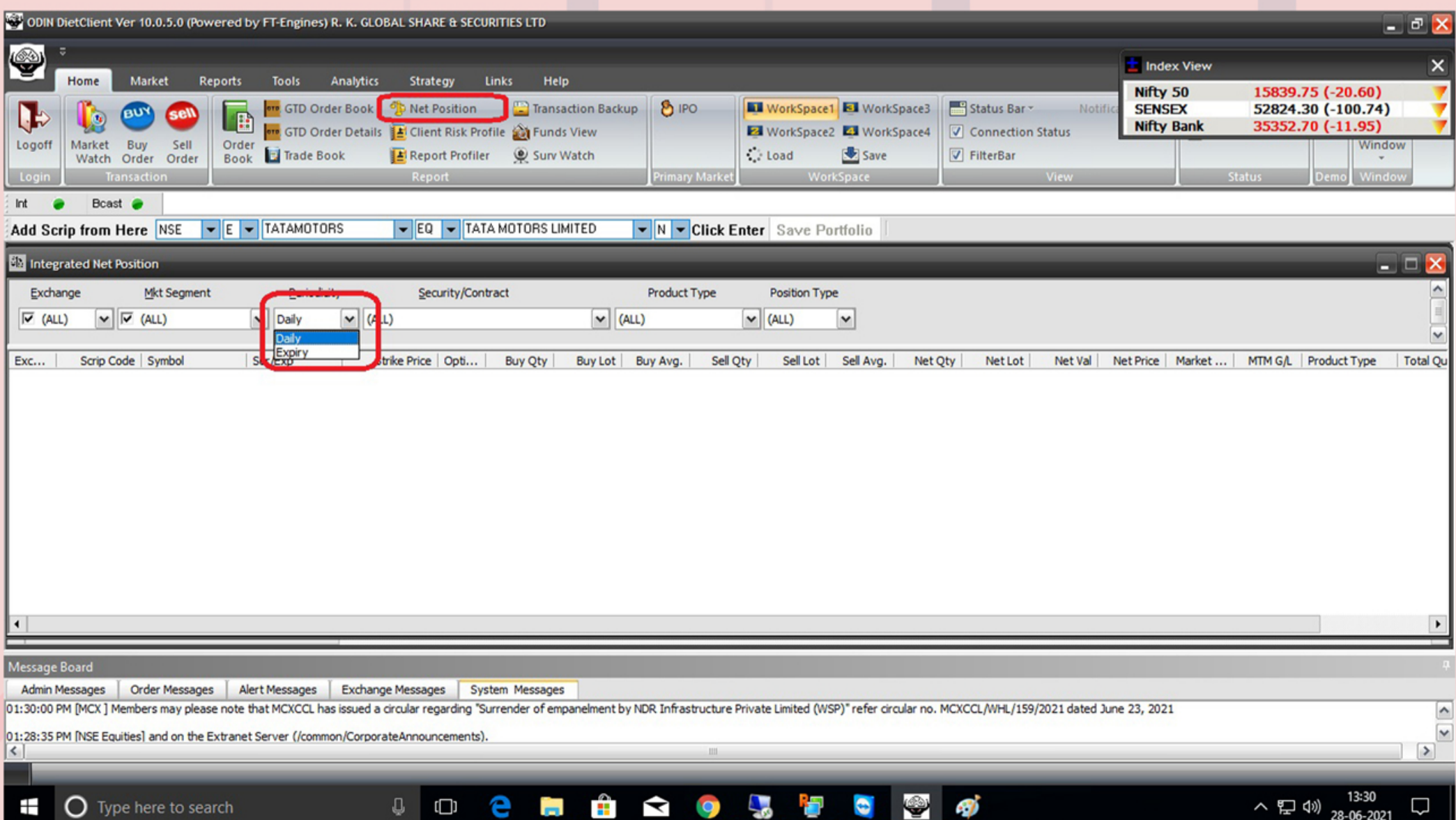
Under the Home tab "Order Book" option is available. Alternatively select any Scrip and press "F3" (twice). Status of your order will be displayed here. To "Modify or Cancel", select the order and right click on it. From the dropdown box select option as per your choice.



How to check your Net Position?

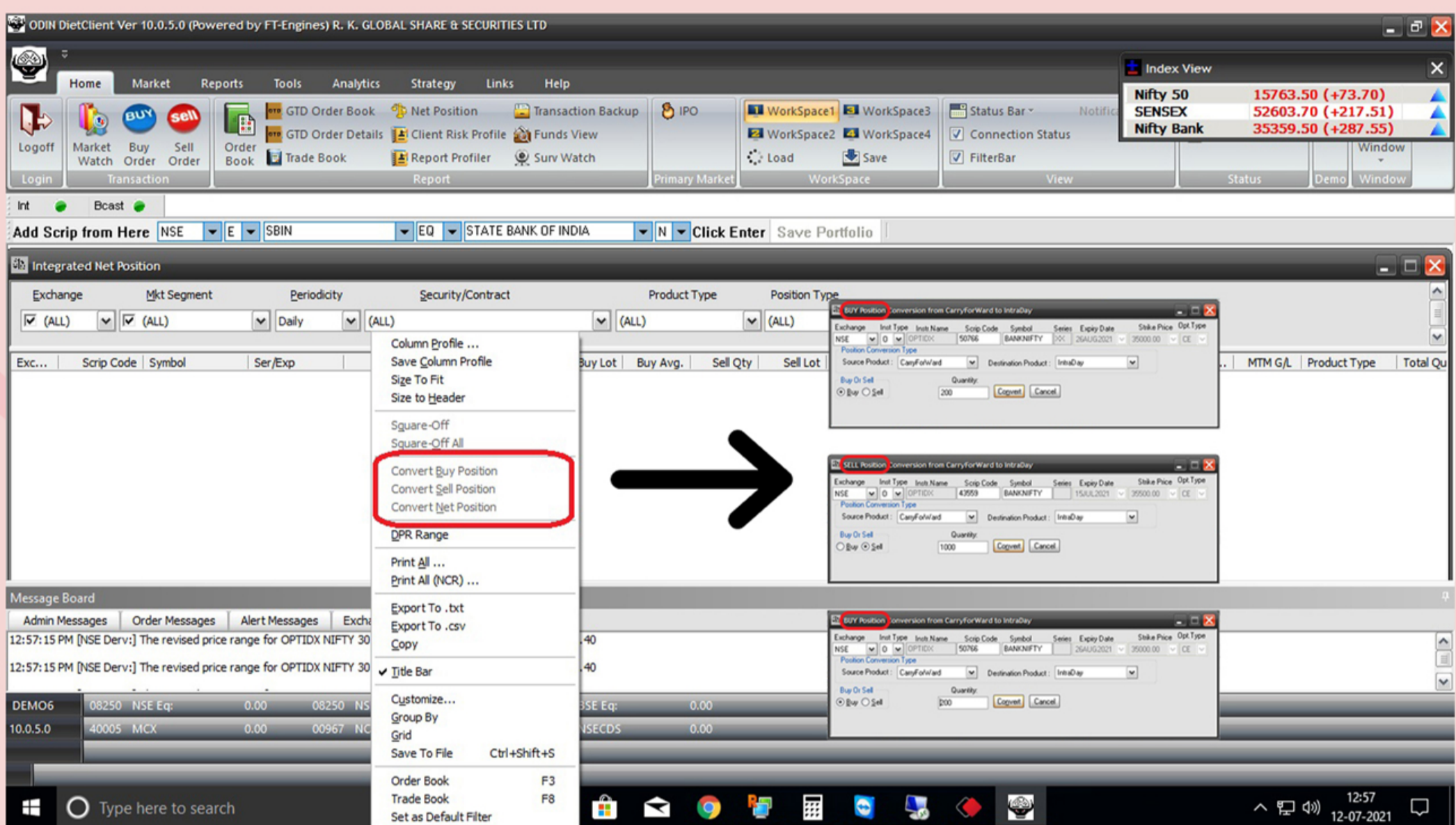
07

Under Home tab "Net Position" is available. Alternatively press "Alt + F6" from keyboard. Select the necessary parameters like Periodicity, Position type etc and press enter to view your Current / Net Position.



How to convert your Open Position from Intraday to Delivery and Vice Versa?

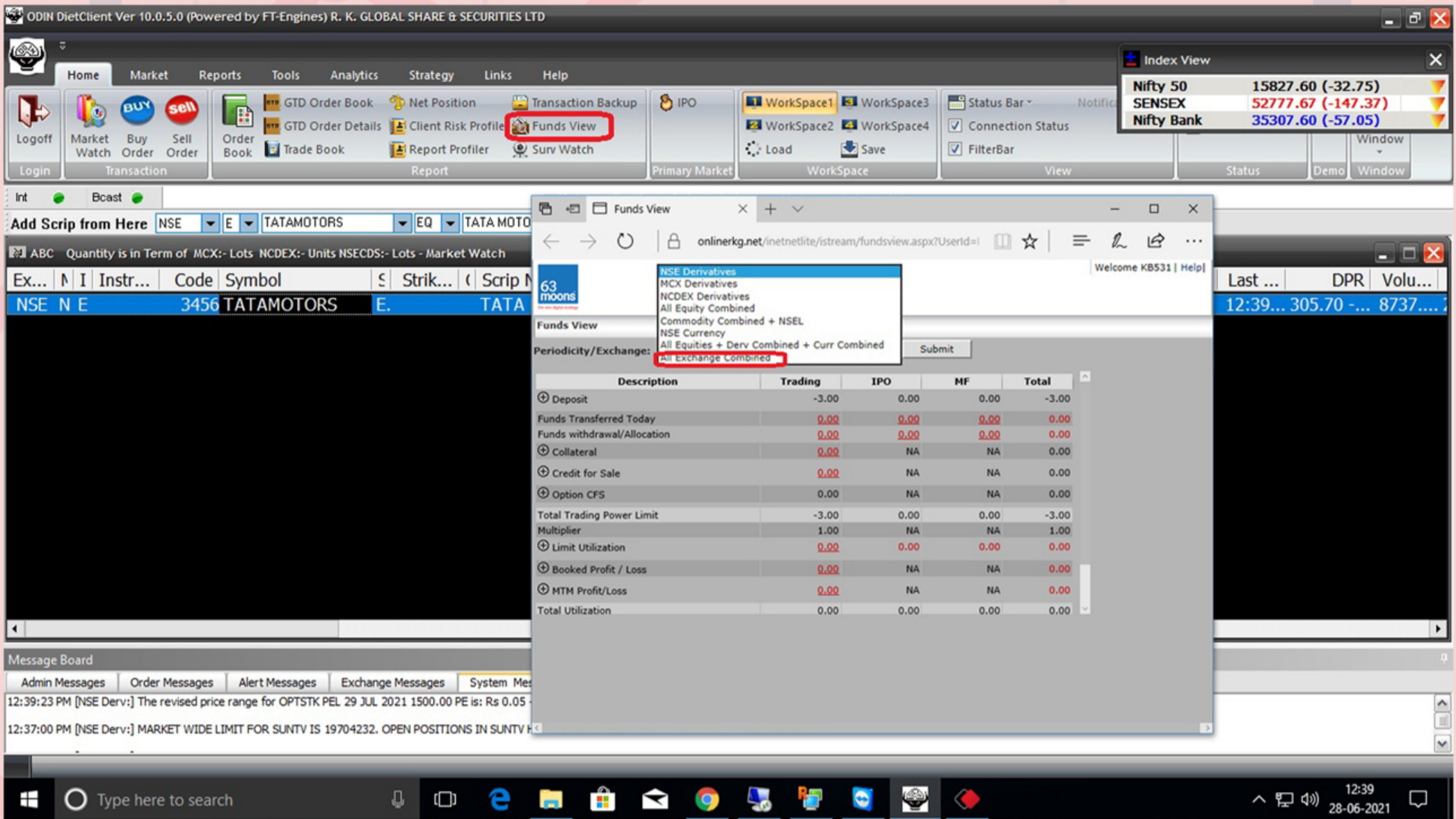
Select the Scrip which you want to convert from the Net Position page, Right click on it. Select **"Convert Buy / Convert Sell / Convert Net"** option based on your choice. Recheck the selected parameters like Source Product, Destination Product and Quantity. Press **"Convert"** to change the Position.



09

How to check your Available Funds?

Under the Home tab "Funds View" is available. Select "All Exchange Combined" from the dropdown list and press "Submit" to view your Available Funds.



How to transfer your Funds from your account to R K Global and Vice Versa?

10

Under the Links tab "Funds Transfer" option is available. Upon clicking, it will redirect you to a new page. Select "To Broker Account (payin)" or "To Client Account (payout)", based on your choice. Proceed accordingly.

